



Portable Security and Cabinet Locks





Contents

4-5	One Key Convenience
6-7	Portable Security Product Guide
8	Brass Padlocks
9	Steel Padlocks
10	Chrome-Plated Brass Padlocks
11	Locking Cables, Security Chains, Padlocks
12	Complete Cylinders
13	KS-Series Padlock Parts
13	KS-Series Cables
14-15	Padlock Parts and Accessories
16	CL-Series Cabinet Locks Product Guide
17-18	Cabinet Lock Functions
19	Conversion Chart

Pictured here: Braided steel cable
with vinyl coating

Cover photo: 90 Series lock and CL-Series 777R
cabinet lock both with full size interchangeable
core shown in 652 Steel



Put your trust in the name you know.

For more than 85 years Schlage has been providing innovative security solutions for schools, hospitals, hotels, condominiums and a host of other commercial buildings. Today, Schlage is at the forefront of cutting-edge technology such as wireless security systems, biometrics and CCTV. With a wide range of products, styles and finishes, Schlage has what you need no matter how demanding your project specifications may be. And we stand behind every lock we make with some of the best after-sales service in the business. It's this commitment to design, performance and technology that ensures you can stand behind our products too.

Real security is knowing exactly what you want and getting it.

When you know exactly what you want, you don't want to waste time finding out whether it meets your project specifications. That's why we offer the world's largest team of hardware specification writers to help you and your clients turn your vision into reality. And when it comes to products, our full range of portable security products, commercial suiting options, wide variety of lever designs and rich selection of finishes give you the tools you need to make your projects perfect. You know what you want. With Schlage you can be sure you'll get it.

Safety, security and confidence.

When you choose a Schlage lock you can be sure you've done the job right the first time. After all, our products are among the most durable and dependable on the market today. Our locks are easy to install, and simple to repair and maintain. That means fewer callbacks for you and total safety and security for your customers.





One key convenience.

Schlage portable security products provide single-key convenience throughout any facility or security area. These locks can be master keyed into any new or existing Schlage key system, allowing you to integrate padlocks with door hardware and eliminating the need for separate keys. These products are also available with Primus® or Everest® cylinders for applications that require extra security.

Education

- Perimeter Security
- Storage Facilities
- Athletic Equipment Storage
- Gym, Auditorium, Cafeteria Seating
- Cafeteria Food Storage
- Utility / Mechanical Control Cabinets
- Janitorial Storage
- Classroom Mechanical and Electronic Equipment Immobilization

Transportation

- Perimeter Security
- Storage Facilities
- Containers

Airport

- Perimeter Security
- Equipment Storage Facilities
- Utility / Mechanical Control Cabinets
- Janitorial Storage
- Fuel Distribution and Storage
- Retail / Kiosk Security and Immobilization

Retail Loss Prevention

- Kiosk Security and Immobilization
- Outdoor Product Displays
- Valuable Indoor Product Displays
- Storage Facilities

Commercial Job Site

- Perimeter Security
- Outbuildings / Storage Facilities
- Office/Model Home
- Tools and Equipment

Healthcare

- Perimeter Security
- Outbuildings / Storage Facilities
- Medical Equipment Storage
- Utility / Mechanical Control Cabinets
- Cafeteria Food Storage

Pictured here: Security chain and padlock shown in 652 Steel



Portable Security

Heavy duty performance for high-traffic applications.

At Schlage we know that every product you choose has to stand up to constant use and abuse without compromising security. Our full line of portable security products delivers tough protection on the job site or at your business, keeping your tools, equipment, supplies, and buildings safe and secure. A wide range of sizes, styles and finishes ensures you get the right lock for the job.

We don't compromise on security.

The safety and security of your property and equipment is something we take very seriously. Every Schlage lock undergoes intensive testing including:

- Cycle tests
- Corrosion tests
- Resistance tests
- Impact tests



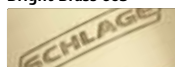
Portable Security Product Guide

Experience one-key convenience with Schlage portable security products. This extensive range of commercial-grade products includes padlocks, flexible steel locking cables and security chains. These products can be integrated into a new or existing key system, eliminating the need for separate keys, and are perfect for securing a wide variety of lock-up situations.

10 Series



Bright Brass 605



Chrome Plated Brass 625

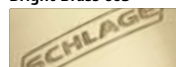


1/4" Shackle Diameter

20 Series



Bright Brass 605



Chrome Plated Brass 625

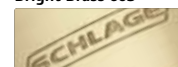


5/16" Shackle Diameter

40 Series



Bright Brass 605



Chrome Plated Brass 625



3/8" Shackle Diameter

70 Series



Steel 652



7/16" Shackle Diameter

80 Series



Steel 652



5/16" Shackle Diameter

Security Chain & Padlock



90 Series



Steel 652



3/8" Shackle Diameter

Locking Cables



Brass Padlocks

- Meet or exceed ASTM standards for standard steel shackle, shackle cutting and corrosion resistance
- Solid brass body resists corrosion for all-weather performance
- Molybdenum hardened steel shackle offers greater cut resistance
- Double deadbolt locking mechanism provides extra security
- Patented interchangeable shackle design allows for easy disassembly
- Standard cylinder features include:
 - Schlage conventional key-in-knob (KNK) cylinder
 - 6-pin solid brass cylinder (pinned 5) offers increased pick resistance
 - Two nickel silver cut Schlage keys



	Body Size			Shackle Dimension			Shackle Dimension (metric)			Cylinder Type	Case Pack	Master Pack
Part #	Width	Height	Depth	A	B	C	A	B	C			
Keyed Different												
KS13A2300	1 25/32'''	2 3/16"	7/8"	1/4"	3/4"	3/4"	6.4mm	19mm	19mm	KNK	6	24
KS13D2300	1 25/32"	2 3/16"	7/8"	1/4"	1 1/2"	3/4"	6.4mm	38mm	19mm	KNK	6	24
KS13F2300	1 25/32"	2 3/16"	7/8"	1/4"	2"	3/4"	6.4mm	51mm	19mm	KNK	6	24
KS13G2300	1 25/32"	2 3/16"	7/8"	1/4"	4"	3/4"	6.4mm	102mm	19mm	KNK	6	24
KS23A2300	1 25/32"	2 3/16"	7/8"	5/16"	3/4"	3/4"	8mm	19mm	19mm	KNK	6	24
KS23D2300	1 25/32"	2 3/16"	7/8"	5/16"	1 1/2"	3/4"	8mm	38mm	19mm	KNK	6	24
KS23F2300	1 25/32"	2 3/16"	7/8"	5/16"	2"	3/4"	8mm	51mm	19mm	KNK	6	24
KS23G2300	1 25/32"	2 3/16"	7/8"	5/16"	4"	3/4"	8mm	102mm	19mm	KNK	6	24
KS43A2300	1 15/16"	2 3/16"	7/8"	3/8"	3/4"	3/4"	9.5mm	19mm	19mm	KNK	6	24
KS43D2300	1 15/16"	2 3/16"	7/8"	3/8"	1 1/2"	3/4"	9.5mm	38mm	19mm	KNK	6	24
KS43F2300	1 15/16"	2 3/16"	7/8"	3/8"	2"	3/4"	9.5mm	51mm	19mm	KNK	6	24
KS43G2300	1 15/16"	2 3/16"	7/8"	3/8"	4"	3/4"	9.5mm	102mm	19mm	KNK	6	24
Less Cylinder - KNK												
KS13A2200	1 25/32"	2 3/16"	7/8"	1/4"	3/4"	3/4"	6.4mm	19mm	19mm	KNK	6	24
KS13D2200	1 25/32"	2 3/16"	7/8"	1/4"	2"	3/4"	6.4mm	51mm	19mm	KNK	6	24
KS13F2200	1 25/32"	2 3/16"	7/8"	5/16"	3/4"	3/4"	8mm	19mm	19mm	KNK	6	24
KS13G2200	1 25/32"	2 3/16"	7/8"	5/16"	2"	3/4"	8mm	51mm	19mm	KNK	6	24
KS23A2200	1 25/32"	2 3/16"	7/8"	1/4"	3/4"	3/4"	6.4mm	19mm	19mm	KNK	6	24
KS23D2200	1 25/32"	2 3/16"	7/8"	1/4"	2"	3/4"	6.4mm	51mm	19mm	KNK	6	24
KS23F2200	1 25/32"	2 3/16"	7/8"	5/16"	3/4"	3/4"	8mm	19mm	19mm	KNK	6	24
KS23G2200	1 25/32"	2 3/16"	7/8"	5/16"	2"	3/4"	8mm	51mm	19mm	KNK	6	24
KS43A2200	1 25/32"	2 3/16"	7/8"	1/4"	3/4"	3/4"	6.4mm	19mm	19mm	KNK	6	24
KS43D2200	1 25/32"	2 3/16"	7/8"	1/4"	2"	3/4"	6.4mm	51mm	19mm	KNK	6	24
KS43F2200	1 25/32"	2 3/16"	7/8"	5/16"	3/4"	3/4"	8mm	19mm	19mm	KNK	6	24
KS43G2200	1 25/32"	2 3/16"	7/8"	5/16"	2"	3/4"	8mm	51mm	19mm	KNK	6	24
Less Cylinder - FSIC ¹												
KS43A3200	1 15/16"	2 3/16"	7/8"	3/8"	3/4"	3/4"	9.5mm	19mm	19mm	KNK	6	24
KS43D3200	1 15/16"	2 3/16"	7/8"	3/8"	1 1/2"	3/4"	9.5mm	38mm	19mm	KNK	6	24
KS43F3200	1 15/16"	2 3/16"	7/8"	3/8"	2"	3/4"	9.5mm	51mm	19mm	KNK	6	24
KS43G3200	1 15/16"	2 3/16"	7/8"	3/8"	4"	3/4"	9.5mm	102mm	19mm	KNK	6	24

NOTE: 1) Less cylinder padlocks ship without a cylinder. Driver and all other internal padlock parts are included.

Steel Padlocks

- Meet or exceed ASTM standards for standard steel shackle, shackle cutting and corrosion resistance
- Case hardened solid steel body resists impact
- Molybdenum hardened steel shackle offers greater cut resistance
- Double deadbolt locking mechanism provides extra security
- Patented interchangeable shackle design allows for easy disassembly
- Shrouded padlocks (80 & 90 Series) provide increased cut resistance
- Standard cylinder features include:
 - Schlage conventional key-in-knob (KNK) cylinder
 - 6-pin solid brass cylinder (pinned 5) offers increased pick resistance
 - Two nickel silver cut Schlage keys
 - 7-pin SFIC – less cylinder
 - Compatible with Schlage, Falcon®, Best®, Master Lock® and Arrow®
 - Full size interchangeable core



72 Series



82 Series



92 Series

	Body Size			Shackle Dimension			Shackle Dimension (metric)					
Part #	Width	Height	Depth	A	B	C	A	B	C	Cylinder Type	Case Pack	Master Pack
Keyed Different												
KS72F2300	2 5/8"	2 3/8"	1 3/32"	7/16"	2"	7/8"	11mm	51mm	22mm	KNK	6	18
Less Cylinder - KNK ¹												
KS72M2200	2 5/8"	2 3/8"	1 3/32"	7/16"	1"	7/8"	11mm	25mm	22mm	KNK	6	18
KS72F2200	2 5/8"	2 3/8"	1 3/32"	7/16"	2"	7/8"	11mm	51mm	22mm	KNK	6	18
KS82M2200	1 13/16"	3 7/16"	1 3/32"	5/16"	1"	3/4"	8mm	25mm	19mm	KNK	6	18
KS92M2200	2 1/8"	3 7/16"	1 3/16"	3/8"	1"	3/4"	9.5mm	25mm	19mm	KNK	6	18
Less Cylinder - SFIC ¹												
KS72M1200	2 5/8"	2 3/8"	1 3/32"	7/16"	1"	7/8"	11mm	25mm	22mm	SFIC	6	18
KS72F1200	2 5/8"	2 3/8"	1 3/32"	7/16"	2"	7/8"	11mm	51mm	22mm	SFIC	6	18
KS82M1200	1 13/16"	3 7/16"	1 3/32"	5/16"	1"	3/4"	8mm	25mm	19mm	SFIC	6	18
KS92M1200	2 1/8"	3 7/16"	1 3/16"	3/8"	1"	3/4"	9.5mm	25mm	19mm	SFIC	6	18
Less Cyinder - FSIC												
KS72M3200	2 5/8"	2 3/8"	1 3/32"	7/16"	1"	7/8"	11mm	25mm	22mm	SFIC	6	18
KS72F3200	2 5/8"	2 3/8"	1 3/32"	7/16"	2"	7/8"	11mm	51mm	22mm	SFIC	6	18
KS92M3200	2 1/8"	3 7/16"	1 3/16"	3/8"	1"	3/4"	9.5mm	25mm	19mm	SFIC	6	18

NOTES: 1) Product is shipped without cylinder and with driver (for KNK). For cylinder and keying options, refer to your Schlage price book.

Chrome-Plated Brass Padlocks

- Meet or exceed ASTM standards for standard steel shackle, shackle cutting and corrosion resistance
- Chrome-plated solid brass body resists corrosion for all-weather performance
- Molybdenum hardened steel shackle offers greater cut resistance
- Double deadbolt locking mechanism provides extra security
- Patented interchangeable shackle design allows for easy disassembly
- Standard cylinder features include:
 - 7-pin SFIC – less cylinder
 - Compatible with Schlage, Falcon, Best, Master Lock and Arrow



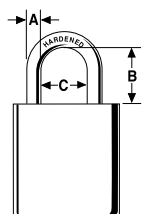
11 Series

21 Series

41 Series

	Body Size			Shackle Dimension			Shackle Dimension (metric)					
Part #	Width	Height	Depth	A	B	C	A	B	C	Cylinder Type	Case Pack	Master Pack
Less Cylinder												
KS11A1200	1 25/32"	2 3/16"	7/8"	1/4"	3/4"	3/4"	6.4mm	19mm	19mm	SFIC	6	24
KS11D1200	1 25/32"	2 3/16"	7/8"	1/4"	1 1/2"	3/4"	6.4mm	38mm	19mm	SFIC	6	24
KS11F1200	1 25/32"	2 3/16"	7/8"	1/4"	2"	3/4"	6.4mm	51mm	19mm	SFIC	6	24
KS11G1200	1 25/32"	2 3/16"	7/8"	1/4"	4"	3/4"	6.4mm	102mm	19mm	SFIC	6	24
KS21A1200	1 25/32"	2 3/16"	7/8"	5/16"	3/4"	3/4"	8mm	19mm	19mm	SFIC	6	24
KS21D1200	1 25/32"	2 3/16"	7/8"	5/16"	1 1/2"	3/4"	8mm	38mm	19mm	SFIC	6	24
KS21F1200	1 25/32"	2 3/16"	7/8"	5/16"	2"	3/4"	8mm	51mm	19mm	SFIC	6	24
KS21G1200	1 25/32"	2 3/16"	7/8"	5/16"	4"	3/4"	8mm	102mm	19mm	SFIC	6	24
KS41A1200	1 15/16"	2 3/16"	7/8"	3/8"	3/4"	3/4"	9.5mm	19mm	19mm	SFIC	6	24
KS41D1200	1 15/16"	2 3/16"	7/8"	3/8"	1 1/2"	3/4"	9.5mm	38mm	19mm	SFIC	6	24
KS41F1200	1 15/16"	2 3/16"	7/8"	3/8"	2"	3/4"	9.5mm	51mm	19mm	SFIC	6	24
KS41G1200	1 15/16"	2 3/16"	7/8"	3/8"	4"	3/4"	9.5mm	102mm	19mm	SFIC	6	24

NOTES: 1) Product is shipped without cylinder. For cylinder and keying options, refer to your Schlage price book.



Shackle Dimensions

Locking Cables

- Braided steel vinyl coated cable provides greater cut resistance than twisted cable
- Integrated die-cast zinc locking head (407 satin finish)
- Standard cylinder features include:
 - Schlage conventional key-in-knob (KNK) cylinder
- 6-pin solid brass cylinder (pinned 5) offers increased pick resistance
- Two nickel silver cut Schlage keys
- 7-pin SFIC
- Less cylinder
- Compatible with Schlage, Falcon, Best, Master Lock and Arrow



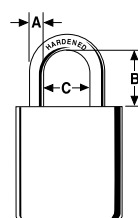
Cable Series - KC215 Series

	Cable Size		Cable Size (metric)				
Part #	Length	Diameter	Length	Diameter	Cylinder Type	Case Pack	Master Pack
Keyed Different							
KC215E220	6′	5/8″	182cm	15mm	KNK	1	5
KC220E220	6′	3/4″	182cm	20mm	KNK	1	5
Less Cylinder							
KC215A130	2′	5/8″	60cm	15mm	SFIC	1	5
KC215A230	2′	5/8″	60cm	15mm	KNK	1	5
KC215B130	4′	5/8″	120cm	15mm	SFIC	1	5
KC215B230	4′	5/8″	120cm	15mm	KNK	1	5
KC215E230	6′	5/8″	182cm	15mm	KNK	1	5
KC220E230	6′	3/4″	182cm	20mm	KNK	1	5
KC215E130	6′	5/8″	182cm	15mm	SFIC	1	5

NOTE: 1) Product is shipped without cylinder and with driver. For cylinder and keying options, refer to your Schlage price book.

Security Chains and Padlocks

- Triple heat-treated boron manganese steel chain
- Unique trapezoidal-shaped chain links for maximum cut resistance
- Features KS72F2300 solid steel round padlock
- Standard cylinder features include:
 - Schlage conventional key-in-knob (KNK) cylinder
- 6-pin solid brass cylinder (pinned 5) offers increased pick resistance
- Two nickel silver cut Schlage keys



Shackle Dimensions



Chain Series - KKY Series

	Chain Size	Chain Size (metric)	Shackle Dimension			Shackle Dimension (metric)					
Part #	Length	Length	A	B	C	A	B	C	Cylinder Type	Case Pack	Master Pack
Keyed Different											
KKX16	3' 5"	104.1 cm	7/16"	2"	7/8"	11mm	51mm	22mm	KNK	1	1
KKY16	5' 6"	167.6 cm	7/16"	2"	7/8"	11mm	51mm	22mm	KNK	1	1
Chain Only (No Cover)											
810223	4' 3"	129.5 cm	N/A			N/A			N/A	1	1
810230	2' 3"	68.6 cm							N/A	1	1

NOTE: 1) For master keyed or keyed alike product, order chain and padlocks separately. Order chains #810223 or #810230 with padlock KS72F. Prices are for chains only.

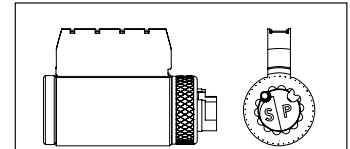
Complete Cylinders

Conventional Key-in-Knob

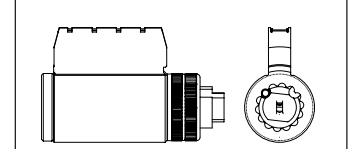


Cylinder mechanism	KS-Series part number	KC-Series part number
Conventional	47-413	47-414
Primus [®]	47-743	47-744
Primus UL437	47-542	47-543

KNK



KS-Series



KC-Series

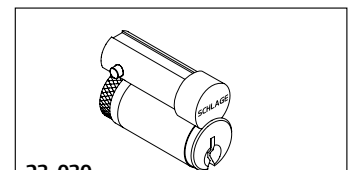
Full Size Interchangeable Core (FSIC)

Schlage figure-8 interchangeable core (FSIC) locks allow immediate rekeying simply by using a special control key to replace the core. Available in PL4000 series, full size interchangeable cores can be integrated into any 5 or 6-pin Schlage key.

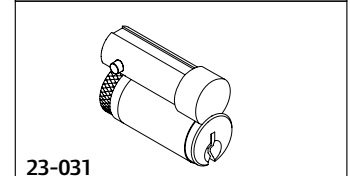


Description	Part number
Conventional core	23-030
Conventional core less Schlage logo	23-031
Primus [®] core	20-740
Primus core less Schlage logo	20-741

FULL SIZE IC



23-030



23-031

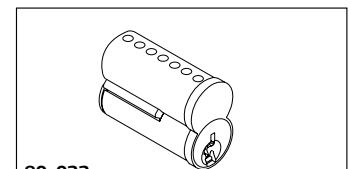
Small Format Interchangeable Core (SFIC)

The SFIC option is designed for Schlage Everest B Family Restricted keyway cores and is also completely compatible with Best, Falcon, and other small format interchangeable cores.

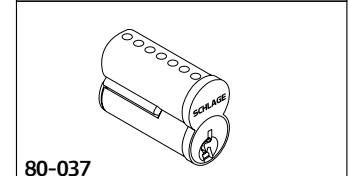


Description	Part number
7-pin uncombined Everest B family restricted keyways	80-036
7-pin combined Everest B family restricted keyways	80-037
6-Pin uncombined Falcon/Best keyways	80-043
7-Pin uncombined Falcon/Best keyways	80-033

SFIC



80-033



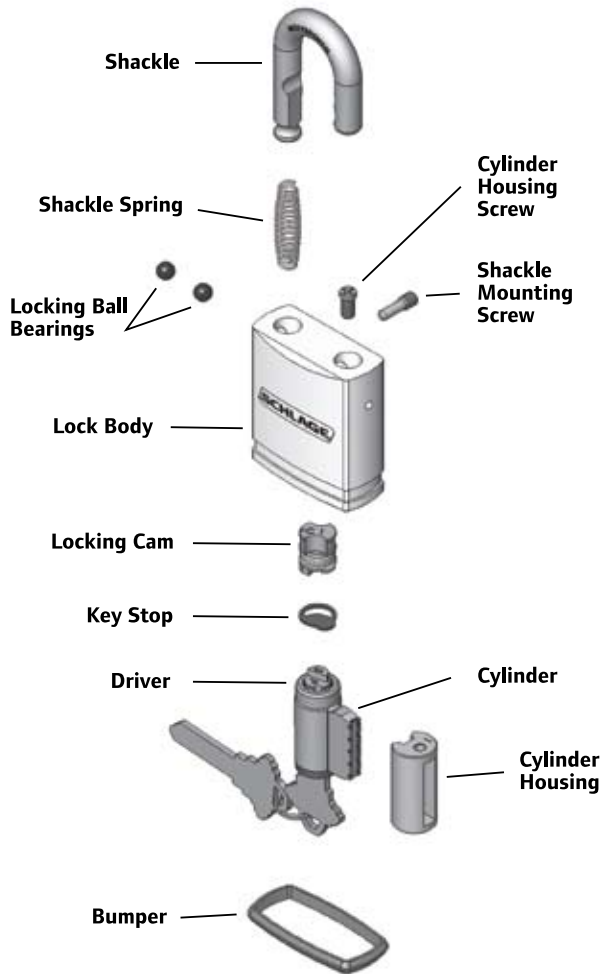
80-037

NOTES:

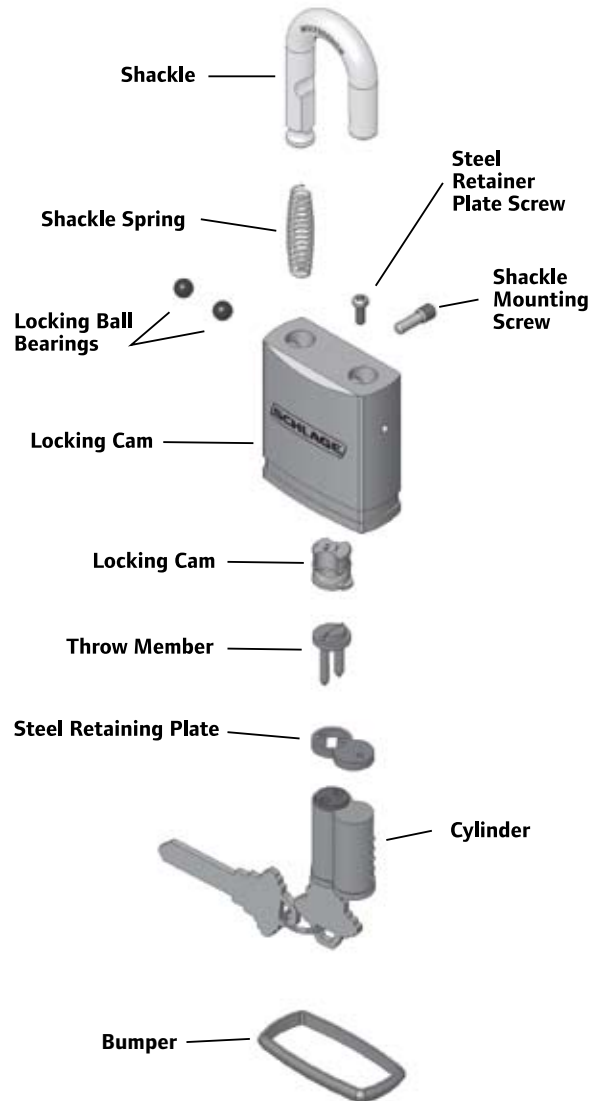
- 1) Falcon and Primus cylinders will ship separately.
- 2) Control keys must be ordered separately.
- 3) Specify keyway for existing systems.
- 4) 80-033 and 80-043 cores are available in Best A, D, E, F, G, H, J, K, L and M keyways. Specify keyway by suffixing "B" to keyway letter, e.g. "AB".
- 5) 80-036 and 80-037 restricted keyway cores require a letter of authorization from the end user.
- 6) For details see Keys and Keying section of your Schlage price book.

KS-Series Padlock Parts

Conventional Key-in-Knob

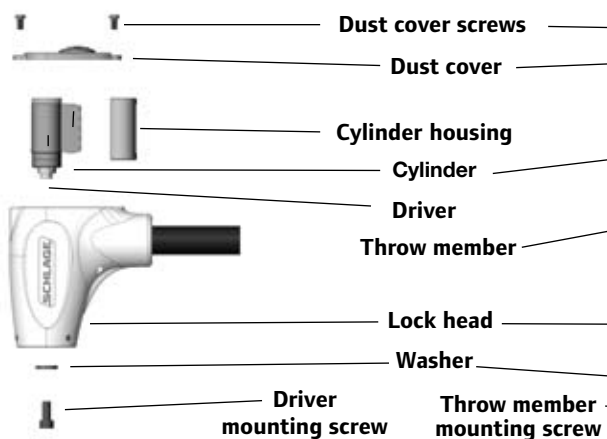


Small Format Interchangeable Core

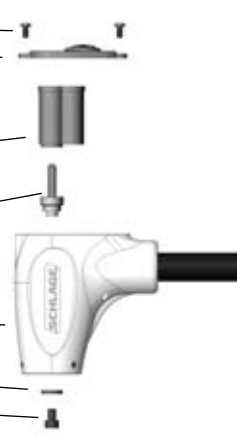


KS-Series Cable

Conventional Key-in-Knob



Small Format Interchangeable Core



Parts and Accessories - Replacement Parts



Stocked Parts

Part #	Description	Box Qty	Carton Qty
Service Repair - Padlock and Cables - Conventional Key-in-Knob and SFIC			
KZ390AL	Service Repair Kit — Includes 10 of each part below except KZ35AC1, KZ35AC2, KZ36EB0 - Qty 20; KZ37000 - Qty 1 and also includes pliers	1	6
Padlock Parts - Conventional Key-in-Knob			
KZ32CB1	Key Retaining Locking Cam, 10, 20, 40, 80, 90 Series	30	240
KZ32CB2	Key Retaining Locking Cam, 70 Series	30	240
KZ32DA0	Driver	30	240
Padlock Parts - SFIC			
KZ31CB1	Key Retaining Locking Cam, 10, 20, 40, 80, 90 Series	30	240
KZ31CB2	Key Retaining Locking Cam, 70 Series	30	240
Cable Parts			
KZ34DA0	Driver, Key-in-Knob	30	240

While Supplies Last

Part #	Description	Box Qty	Carton Qty
Padlock Parts - Conventional Key-in-Knob & SFIC			
KZ35AA1	Shackle Spring, 10 Series	30	240
KZ35AA2	Shackle Spring, 20, 80 Series	30	240
KZ35AA3	Shackle Spring, 40, 90 Series	30	240
KZ35AA4	Shackle Spring, 70 Series	30	240
KZ35AB1	Shackle Mounting Screw, 10, 20, 40 Series	30	240
KZ35AB2	Shackle Mounting Screw, 70, 80, 90 Series	30	240
KZ35AC1	Locking Ball Bearing, 10, 20, 40, 80, 90 Series	30	240
KZ35AC2	Locking Ball Bearing, 70 Series	30	240
KZ35EC1	Bumper, 10, 20 Series	30	240
KZ35EC2	Bumper, 40 Series	30	240
KZ35EC3	Bumper, 80 Series	30	240
KZ35EC4	Bumper, 90 Series		
Padlock Parts - Conventional Key-in-Knob			
KZ32BB0	Cylinder Housing Screw	30	240
KZ32CA1	Locking Cam, 10, 20, 40, 80, 90 Series	30	240
KZ32CA2	Locking Cam, 70 Series	30	240
KZ32CC0	Key Stop	30	240
Padlock and Cable Parts - Conventional Key-in-Knob			
KZ38BA1 *	Cylinder Housing, 20, 40, 70, 80, 90, KC Series	20	160
KZ38BA2 *	Cylinder Housing, 10, KC Series	20	160
Padlock Parts - SFIC			
KZ31CA1	Locking Cam, 10, 20, 40, 80, 90 Series	30	240
KZ31CA2	Locking Cam, 70 Series	30	240
KZ31CC1	Steel Retainer Plate, 10, 20, 40, 80, 90 Series	30	240
KZ31CC2	Steel Retainer Plate, 70 Series	30	240
KZ31CD0	Steel Retainer Plate Screw	30	240
KZ31DA0	Throw Member	30	240
KZ37000	Installation Tool	6	36
Cable Parts			
KZ33CA0	Throw Member, SFIC	30	240
KZ33DB0	Washer, Key-in-Knob/SFIC	30	240
KZ33DC0	Driver Mounting Screw, Key-in-Knob	30	240
KZ34CA0	Cylinder Cap, Key-in-Knob	30	240
KZ34DC0	Throw Member Mounting Screw, SFIC	30	240
KZ34ED0	Cylinder Cap Pin, Key-in-Knob	30	240
KZ36EA0	Dust Cover, Key-in-Knob/SFIC	30	240
KZ36EB0	Dust Cover Screw, Key-in-Knob/SFIC	30	240

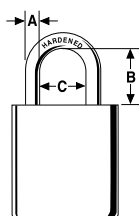
*Cable series can use either cylinder housing part KZ38BA1 or KZ38BA2.

Parts and Accessories - Replacement Shackles



	Shackle Dimension			Shackle Dimension (metric)				
Part #	A	B	C	A	B	C	Box Qty	Carton Qty
Hardened Steel Shackles - For use with 10 Series Padlocks								
KZ11A10	1/4"	3/4"	3/4"	6.4mm	19mm	19mm	6	36
KZ11D10	1/4"	1 1/2"	3/4"	6.4mm	38mm	19mm	6	36
KZ11F10	1/4"	2"	3/4"	6.4mm	51mm	19mm	6	36
KZ11G10	1/4"	4"	3/4"	6.4mm	102mm	19mm	6	36
Hardened Steel Shackles - For use with 20 Series Padlocks								
KZ11A20	5/16"	3/4"	3/4"	8mm	19mm	19mm	6	36
KZ11D20	5/16"	1 1/2"	3/4"	8mm	38mm	19mm	6	36
KZ11F20	5/16"	2"	3/4"	8mm	51mm	19mm	6	36
KZ11G20	5/16"	4"	3/4"	8mm	102mm	19mm	6	36
Hardened Steel Shackles - For use with 40 Series Padlocks								
KZ11A40	3/8"	3/4"	3/4"	9.5mm	19mm	19mm	6	36
KZ11D40	3/8"	1 1/2"	3/4"	9.5mm	38mm	19mm	6	36
KZ11F40	3/8"	2"	3/4"	9.5mm	51mm	19mm	6	36
KZ11G40	3/8"	4"	3/4"	9.5mm	102mm	19mm	6	36
Brass Shackles - For use with 10 Series Padlocks								
KZ12A10	1/4"	3/4"	3/4"	6.4mm	19mm	19mm	6	36
KZ12D10	1/4"	1 1/2"	3/4"	6.4mm	38mm	19mm	6	36
KZ12F10	1/4"	2"	3/4"	6.4mm	51mm	19mm	6	36
KZ12G10	1/4"	4"	3/4"	6.4mm	102mm	19mm	6	36
Brass Shackles - For use with 20 Series Padlocks								
KZ12A20	5/16"	3/4"	3/4"	8mm	19mm	19mm	6	36
KZ12D20	5/16"	1 1/2"	3/4"	8mm	38mm	19mm	6	36
KZ12F20	5/16"	2"	3/4"	8mm	51mm	19mm	6	36
KZ12G20	5/16"	4"	3/4"	8mm	102mm	19mm	6	36
Brass Shackles - For use with 40 Series Padlocks								
KZ12A40	3/8"	3/4"	3/4"	9.5mm	19mm	19mm	6	18
KZ12D40	3/8"	1 1/2"	3/4"	9.5mm	38mm	19mm	6	18
KZ12F40	3/8"	2"	3/4"	9.5mm	51mm	19mm	6	18
KZ12G40	3/8"	4"	3/4"	9.5mm	102mm	19mm	6	18
Accessories								
KZ200AL	9" Retaining Nickel Plated Steel Chain						6	36

Shackle Dimensions



CL-Series Cabinet Locks

Schlage CL-Series cabinet locks use Schlage cylinders that can be master keyed to door hardware for single-key convenience in both new and existing systems. Designed for door, drawer, or cabinets and utility cabinets, the locks are also available with Primus XP high security cylinders for added security.

CL100 Series Door Lock

- Cylinder retaining screw for quick, easy rekeying
- 1" (25 mm) throw steel deadbolt for reliable strength
- Solid brass cylinder for toughness
- Primus high security cylinder

CL200 Series Drawer Lock

- $\frac{3}{4}$ " (19 mm) throw steel deadbolt for optimum toughness
- Solid brass cylinder for added strength
- Primus high security cylinder



Cabinet Lock Functions

Conventional Cylinder



Cabinet Door Lock - CL100PB

Rekeyable: Easily rekeyed via patented set-screw cylinder removal mechanism
Certifications: ANSI A156.11, Grade 2
Body: Die cast zinc
Bolt: Brass, $\frac{15}{16}$ " projection
Door thickness: $\frac{7}{8}$ " to $1 \frac{3}{8}$ "
Barrel diameter: $1 \frac{1}{8}$ "
Cylinder: Schlage
Keying: KD, KA or MK
Finishes: 605, 626

Not available without cylinder



Drawer Lock - CL200PB

Rekeyable: Easily rekeyed via patented set-screw cylinder removal mechanism
Certifications: ANSI A156.11, Grade 2
Body: Die cast zinc
Bolt: Steel, $\frac{3}{4}$ " throw
Door thickness: $\frac{7}{8}$ " to $1 \frac{3}{8}$ "
Barrel diameter: $1 \frac{1}{8}$ "
Cylinder: Schlage
Stock keying: KD, KA or MK
Finishes: 605, 626

Not available without cylinder

Finishes

Bright Brass 605



Satin Chrome 626



Full Size Interchangeable Core (FSIC)



Cabinet Door Lock - CL777R

Rekeyable: Easily rekeyed via patented set-screw cylinder mechanism
Certifications: ANSI A156.11, Grade 1
Body: Die cast zinc
Bolt: Brass, $\frac{15}{16}$ " projection
Barrel length: $1 \frac{7}{16}$ "
Barrel diameter: $1 \frac{1}{8}$ "
Cylinder: Primus XP, Everest or Classic
Keying: KA, KD, MK or construction core
Finishes: 605, 626

Not available without cylinder



Drawer Lock - CL888R

Rekeyable: Easily rekeyed via patented set-screw cylinder mechanism
Certifications: ANSI 156.11, Grade 2
Body: Die cast zinc
Bolt: Brass, $\frac{7}{8}$ " projection
Door thickness: $\frac{7}{8}$ " to $1 \frac{3}{8}$ "
Barrel diameter: $1 \frac{1}{8}$ "
Cylinder: Primus XP, Everest or Classic
Keying: KA, KD, MK or construction core
Finishes: 605, 626

Not available without cylinder



Cam Lock - CL920R

Body: Die cast zinc
Body diameter: $1 \frac{1}{8}$ "
Mounting cutout: $1 \frac{5}{32}$ "
Max material thickness: $1 \frac{1}{8}$ "
Min material thickness: 0.08"
Across flats: $\frac{7}{8}$ "
Cylinder: Primus XP, Everest or Classic
Keying: KA, KD, MK or construction core
Finishes: 605, 626

Not available without cylinder

Cabinet Lock Functions (continued)

Small Format Interchangeable Core (SFIC)



Cabinet Door Lock - CL721G

Certifications: ANSI A156.11, Grade 1
Body: Die cast zinc
Bolt: Brass, 3/4" projection
Door thickness: Fits up to 1 1/4" doors
Barrel diameter: 1 1/8"
Cylinder: Everest B
Keying: KA, KD, MK or construction core
Finishes: 626

Not available without cylinder



Drawer Lock - CL771G

Certifications: ANSI A156.11, Grade 1
Body: Die cast zinc
Bolt: Brass, 3/4" projection
Door thickness: Fits up to 1 1/4" doors
Barrel diameter: 1 1/8"
Cylinder: Everest B
Keying: KA, KD, MK or construction core
Finishes: 626

Not available without cylinder



Rim Latch Lock - CL725G

Body: Die cast zinc cylinder housing, stamped steel back plate and steel case
Barrel diameter: 1 1/8"
Max material thickness: 1 1/16"
Compatibility: Retrofits Best 5L Series
Cylinder: Everest B
Keying: KA, KD, MK or construction core
Finishes: 626

Not available without cylinder



Rim Deadbolt Lock - CL775G

Body: Die cast zinc cylinder housing, stamped steel back plate and steel case
Barrel diameter: 1 1/8"
Max material thickness: 1 1/16"
Compatibility: Retrofits Best 5L Series
Cylinder: Everest B
Keying: KA, KD, MK or construction core
Finishes: 626

Not available without cylinder



Cam Lock - CL720G

Body: Die cast zinc
Body diameter: 1 1/8"
Mounting cutout: 1 5/32"
Max material thickness: 1 1/8"
Min material thickness: 0.08"
Across flats: 7/8"
Cylinder: Everest B
Keying: KA, KD, MK or construction core
Finishes: 626

Not available without cylinder



Mailbox Lock - CL728G

Material: Zinc die cast cylinder housing, steel body
Barrel length: Adjustable
Handing: RH standard
Retrofits: Best 8L
Cylinder: Everest B
Keying: KA, KD, MK or construction core
Finishes: 626

Not available without cylinder



Ratchet Lock - CL729G

Body: Die cast zinc
Body diameter: 1 1/8"
Max door material thickness: 1/4"
Cylinder: Everest B
Keying: KA, KD, MK or construction core
Finishes: 626

Not available without cylinder

Conversion Chart

Description	Schlage	Olympus	Best	National	CCL	Sargent	Yale
Door cabinet lock, 6-pin cylinder, 1" throw bolt	CL100PB	700SC	N/A	C9000	N/A	1654	911
Drawer cabinet lock, 6-pin cylinder, 3/4" throw bolt	CL200PB	800SC	N/A	C9000	N/A	N/A	N/A
Door cabinet lock, FSIC, 1" throw bolt	CL777R	777ICP-DR	N/A	N/A	N/A	N/A	N/A
Drawer cabinet lock, FSIC, 3/4" throw bolt	CL888R	888ICP	N/A	N/A	N/A	N/A	N/A
FSIC cam lock	CL920R	920LM/DM	N/A	N/A	N/A	N/A	N/A
Door cabinet lock, SFIC, 1" throw bolt	CL721G	721DR	N/A	N/A	N/A	N/A	N/A
Drawer cabinet lock, SFIC, 3/4" throw bolt	CL771G	721DW	3L7RD2	N/A	N/A	N/A	N/A
Everest patented SFIC rim latch lock	CL725G	725RL	5L7RL2	N/A	N/A	N/A	N/A
Everest patented SFIC rim deadbolt lock	CL775G	725RD	5L7RD2	N/A	N/A	N/A	N/A
Everest patented SFIC cam lock	CL720G	720LM/DM	1E7D4/1E7E4	N/A	N/A	N/A	N/A
Everest patented SFIC mail box lock	CL728G	728MBL	8L7SPR	N/A	N/A	N/A	N/A
Everest patented SFIC ratchet lock	CL729G	729R	3S	N/A	N/A	N/A	N/A



Ingersoll Rand's Security Technologies Sector is a leading global provider of products and services that make environments safe, secure and productive. The Sector's market-leading products include electronic and biometric access control systems; time and attendance and personnel scheduling systems; mechanical locks and portable security, door closers and exit devices, steel doors and frames, architectural hardware and technologies and services for global security markets.

www.ingersollrand.com